

APPROVED SHEATHING

APPROVED HOUSE WRAP BARRIER  
LAPPED OVER VERTICAL LEG OF TRIM

STRUCTALATH TWIN TRAC 2.5

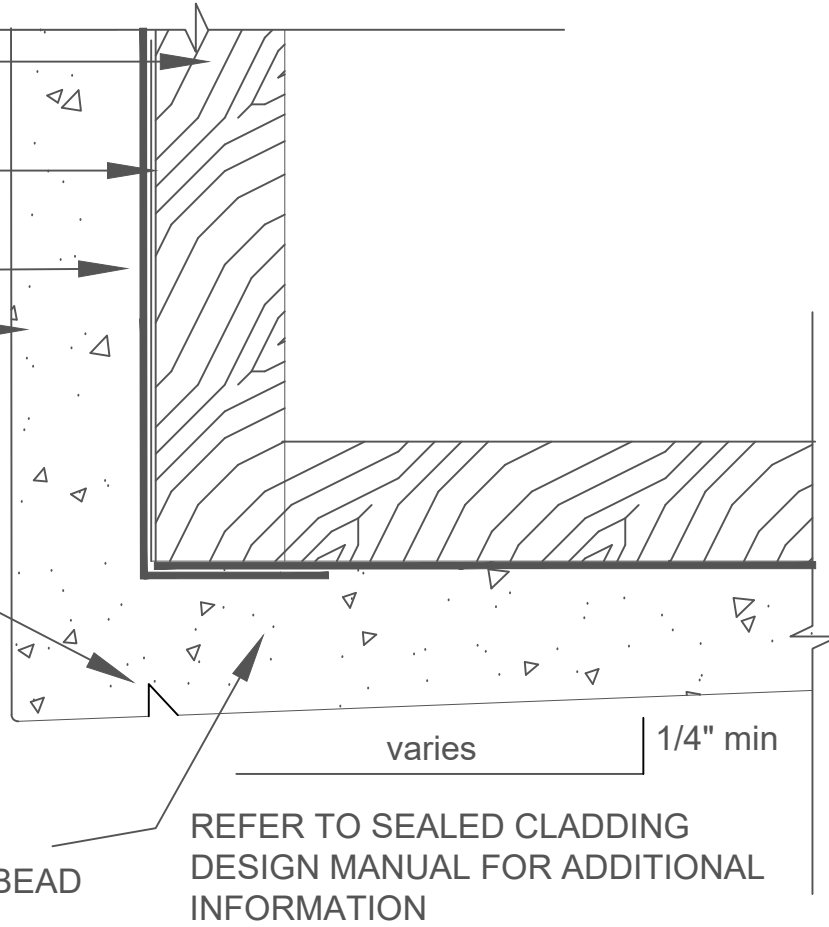
3/4" CEMENT PLASTER

12 MIL (min) DRYLOK EXTREME

USE "V" TOOL TO CUT DRIP STOP  
OPTIONAL BUT RECOMMENDED

USE 8' ROD. LOWER RODFACE  
TO PROVIDE UPWARD SOFFIT  
SLANT PER DIAGRAM

3/4" CEMENT PLASTER OVER STRUCTALATH TWIN  
TRACK. LATH BENT AROUND CORNER 2" OR USE  
PREMADE CORNER STRIP - DO NOT USE CORNERBEAD



Note:  
Details to be used in conjunction with all  
applicable provisions contained in the  
Sealed Cladding System Design Manual.

Sealed Cladding System

07/01/2020

SCS -03\_04

### SCS 03\_04 FASCIA / SOFFIT RODDED INTERFACE