

FRAMING

APPROVED SHEATHING

TYPAR HOUSEWRAP

STRUCTALATH TWIN TRAC 2.5

3/4" CEMENT CLADDING

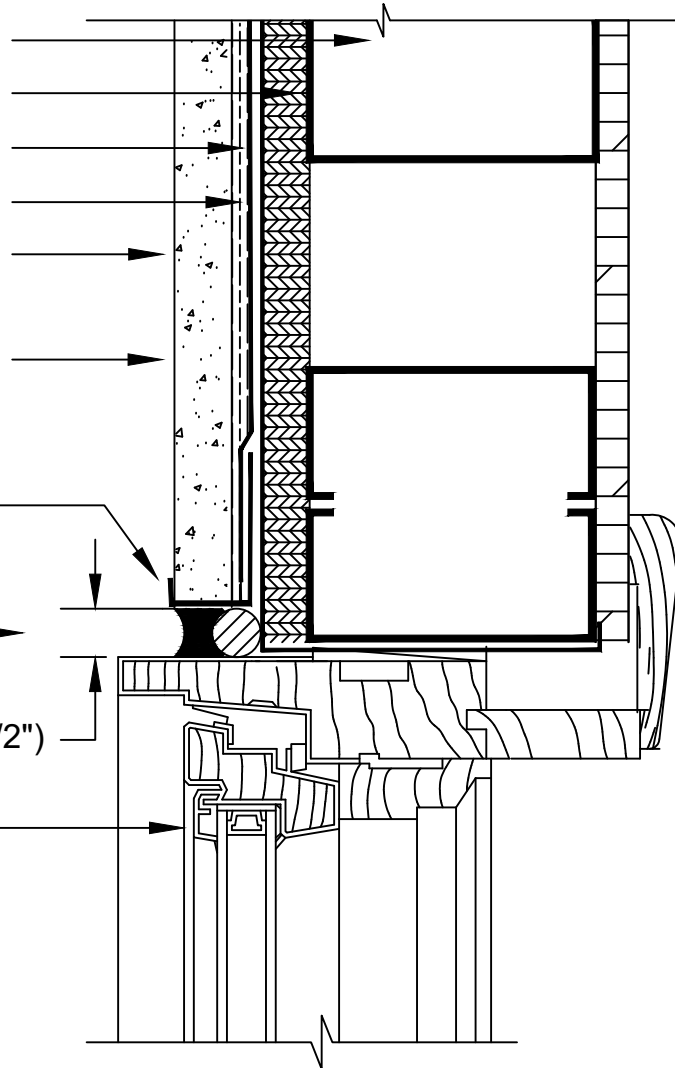
12 MIL (min) DRYLOCK EXTREME

3/4" CASING BEAD

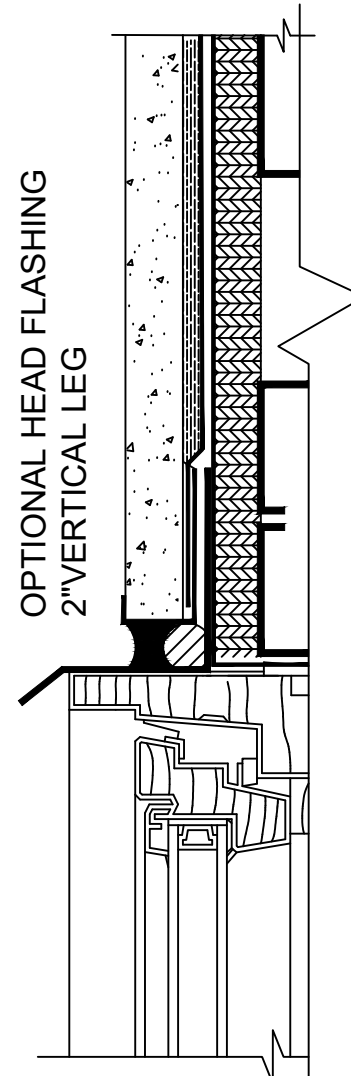
1/2" BACKER ROD AND TOOLED SEALANT

MIN. 13 mm (1/2")

CLAD WINDOW



JAMB INTERFACE



HEAD INTERFACE

SCS 06_03 JAMB INTERFACE WITH CASING STOP

Note:
 Details to be used in conjunction with all applicable provisions contained in the Sealed Cladding System Design Manual.

Sealed Cladding System

07/01/2020

SCS 06_03